



# GAT MONTHLY MEMBERSHIP PROGRESS REPORT

Results as of: 2/28/2023

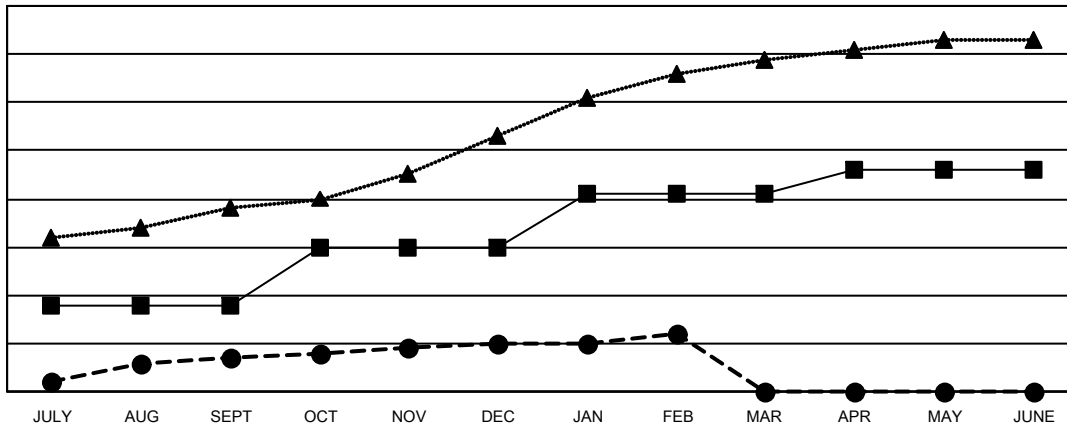
Multiple District 3232

LOCATION: INDIA

Clubs			
RESULTS FOR 2022-2023			
QUARTER	NEW CLUB GOAL	NEW CLUBS	DROPPED CLUBS
JULY/AUG/SEPT	18	7	102
OCT/NOV/DEC	12	3	15
JAN/FEB/MAR	11	2	6
APR/MAY/JUNE	5	0	0

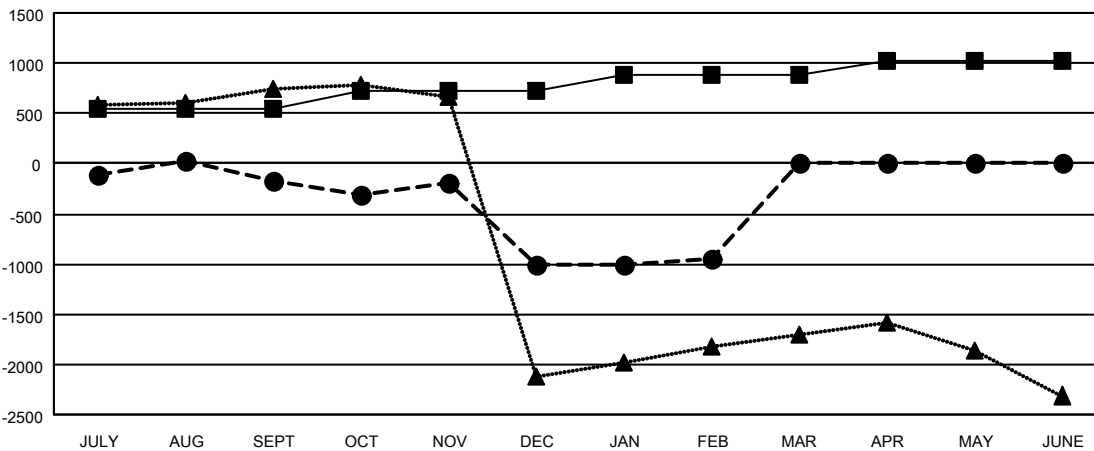
Members			
RESULTS FOR 2022-2023			
QUARTER	MEMBER GROWTH NET GOAL	MEMBER GROWTH ACTUAL	DROPPED MEMBERS ACTUAL (including transfers)
JULY/AUG/SEPT	545	558	658
OCT/NOV/DEC	175	796	1,573
JAN/FEB/MAR	170	153	70
APR/MAY/JUNE	125	0	0

GOALS AND ACTUAL NEW CLUBS CUMULATIVE



- CURRENT YEAR GOALS FOR NEW CLUBS
- CURRENT YEAR ACTUAL NEW CLUBS
- ▲- LAST YEAR ACTUAL NEW CLUBS

GOALS AND ACTUAL MEMBERS CUMULATIVE



- MEMBER GROWTH NET GOAL
- MEMBER GROWTH ACTUAL
- ▲- LAST YEAR MEMBERSHIP ACTUAL

DROPPED CLUBS: 123	
<b>DROPPED MEMBERS</b>	
DECEASED	23
CLUB CANCELLED	320
OTHER	1,958
<b>TOTAL</b>	<b>2,301</b>

206 CLUBS OF 612 ADDED 1 OR MORE NEW MEMBERS

[CLICK HERE FOR CUMULATIVE MEMBERSHIP DATA](#)

GENDER DISTRIBUTION	
MALE	10,649 (63.27%)
FEMALE	6,177 (36.70%)
NON BINARY	0 (0.00%)
PREFER NOT TO ANSWER	4 (0.02%)
<b>TOTAL FAMILY UNIT MEMBERS</b>	<b>12,522</b>
<b>FAMILY MEMBERS PAYING HALF DUES</b>	<b>8,593</b>